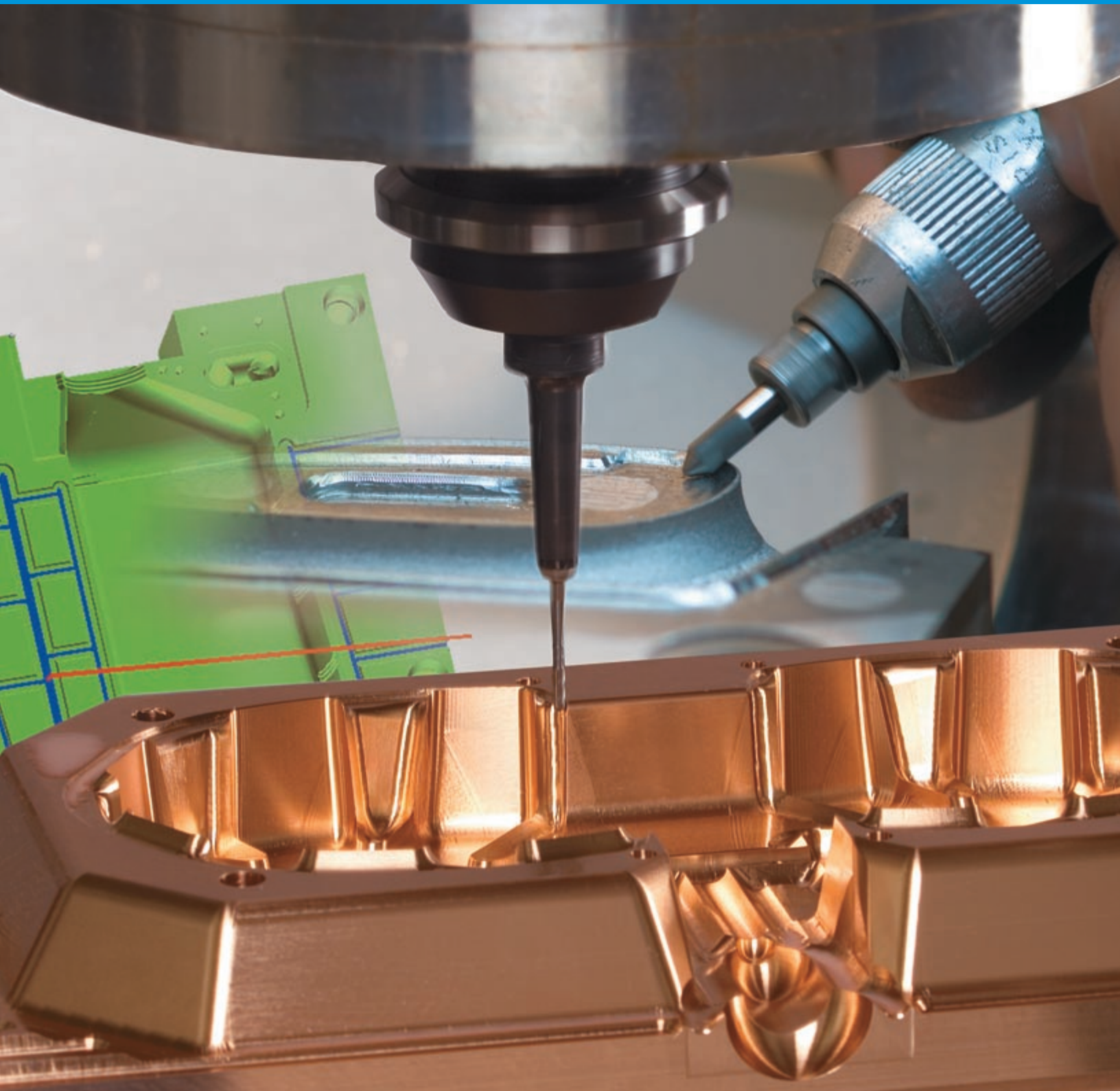


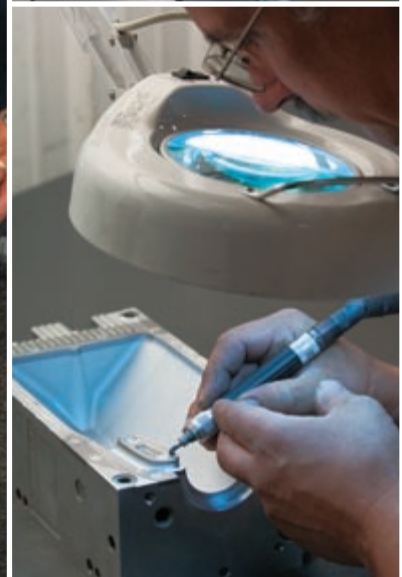
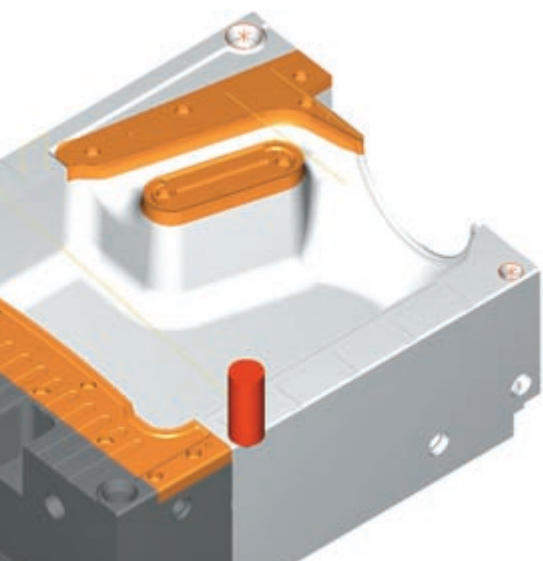


**The Preferred
Source for
Superior Blow Molds
and Tooling**



**The Right Source for All Your
Blow-Molding Needs**

Since 1988, Mid-America Machining has built a quality-driven business and a solid reputation among the blow-molding community. That success is based on our proven ability to deliver viable, process-friendly blow molds and tooling—on time and at competitive prices—while maintaining consistently high quality and complete confidentiality for every project.



The Right People

What sets us apart from competitors is our large and experienced staff. Our product designers and mold design engineers are experts in every aspect of blow-molding and have direct experience with numerous blow-molding machinery platforms. We understand what customers require at the machine level and can help those customers avoid costly problems and design flaws that other mold makers might not understand.

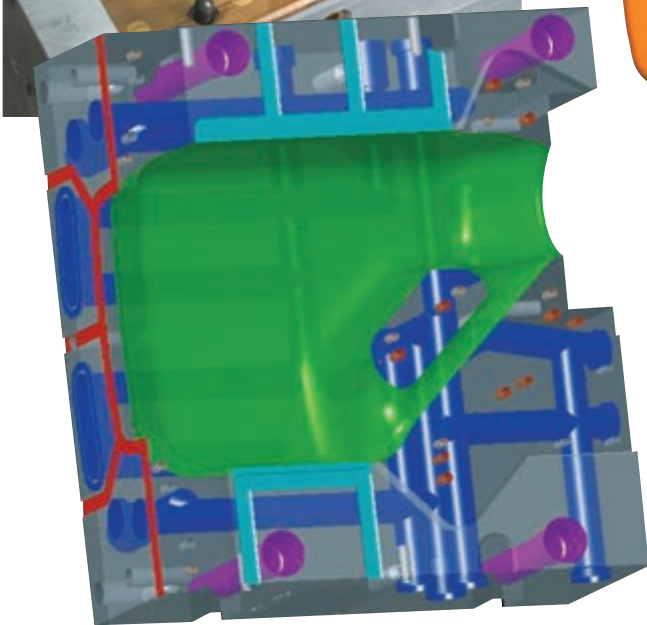
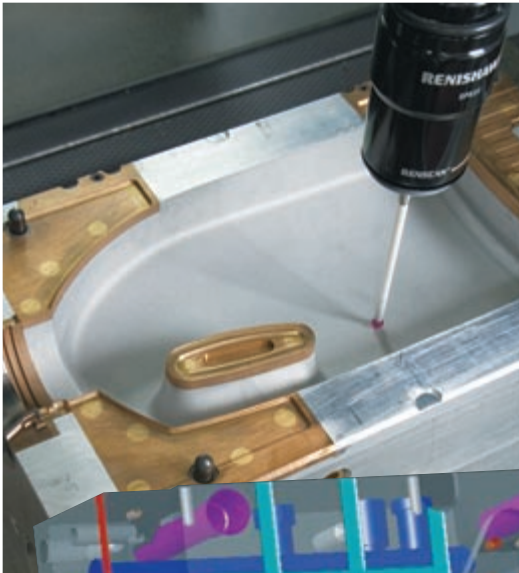
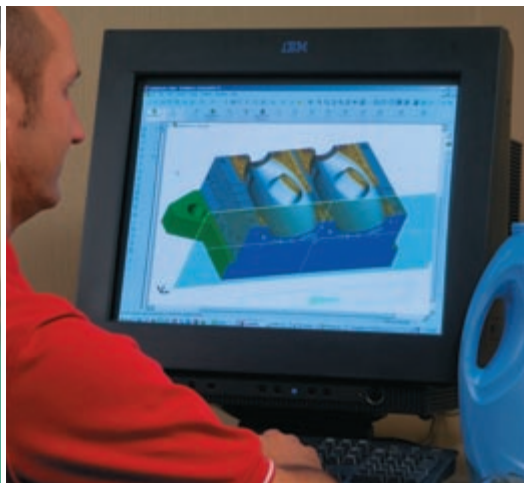
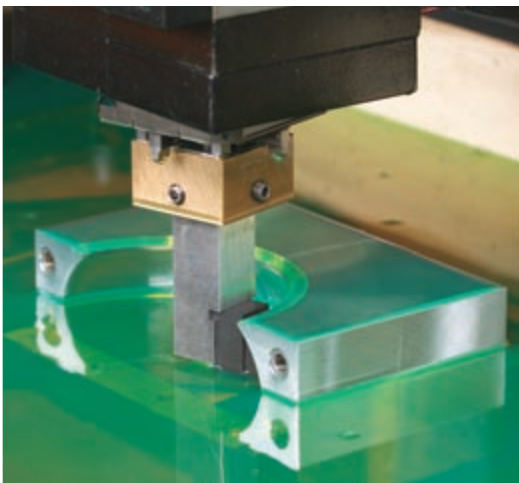
The result is a design that meets your expectations, is process-friendly, and allows you to produce containers at highly efficient rate and cycle times.

The Right Tools

At Mid-America Machining, we're constantly investing in new equipment and technology upgrades to assure optimal results for every design challenge. Using powerful systems such as SolidWorks® 3-D software, the Delcam PowerMill® CAM system, and Hyper Mill®, our product designers can take your ideas—from the simplest renderings to the most sophisticated three-dimensional model—and turn them into viable, blow-moldable containers. Following the initial product development phase, our mold design engineers work diligently to create production-worthy molds—selecting optimal design features and materials to assure maximum cooling, reduced cycle time and faster throughput.

The Right Capabilities

Whatever the project, whatever the challenges, we strive to be your single-source, value-added supplier. Whether you require new molds, trim tooling, replacement components, extrusion/head tooling, technical support, or mold repair and reconditioning, we can deliver the products and services that meet your highest expectations. With our multi-shift operation and 24-hour-a-day manufacturing capabilities—coupled with on-site inspection equipment—give customers a competitive edge in quality and turnaround time. To assure complete confidentiality, our gated facility is carefully secured, with entrance limited to authorized personnel to protect sensitive and highly confidential matters.



State-of-the-art software programs such as SolidWorks® give us the capability to analyze and evaluate every mold design in three-dimensional detail. Optimized cooling is one of the many aspects that we consider in manufacturing superior molds and tooling

At your request, we can also produce solid models via stereo lith (SLA), Ren or acrylic. In addition, we have the resources available to help our customers test unit cavity molds to produce sample containers.

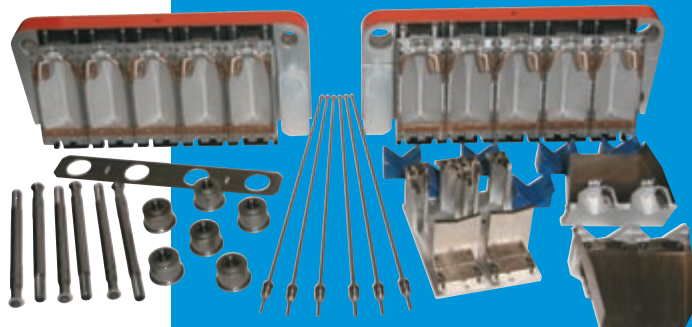
Even with high-speed machining and advanced technology, mold making is still an art—one that requires the skill and attention of highly trained craftsmen.

The Right Approach to Service

Meeting every customer's highest expectations for quality, delivery and support is our primary goal and always has been. In addition to our many other services, we offer expert technical assistance at every phase.

Contact Us Today

For more detailed information about our products and services, or to discuss a blow-molding project with one of our sales and engineering professionals, call Mid-America Machining at (517) 592-8988. You can also reach us by e-mail at info@mid-america-machining.com.



A Value-Added Supplier

You can rely on Mid-America Machining to meet all of your blow-molding needs and requirements—whatever they may be. We offer:

- **Product Development** – Decades of experience in the packaging industry and direct exposure to leading blow molding machinery platforms give our professionals the ability to generate efficient, process-friendly designs.

- **Modeling** – Our modeling capabilities extend to SLA models, MAM-direct CAD data models, and a wide range of visual models.

- **Reverse Engineering** – When an existing mold design needs enhancing or improving, we use Renishaw® technology to capture geometry and required detail.

- **Mold Design** – Years of experience, close communication with customers, and careful attention to detail enable our mold design engineers to create molds that offer superior performance.

- **Unit Cavities/Prototypes** – To facilitate testing and customer buy-in prior to the production mold stage, we can generate single molds and help you produce sample containers.

- **Resource Planning** – Our planning team keeps us on track and on schedule through each phase of every project—from engineering and manufacturing through final inspection.

- **Total Tooling Package** – Whether your mold requirement is reciprocating screw, shuttle or wheel, we have the design and resource capabilities to provide you with all the right tooling components. The “Total Tooling Package” includes molds trim tooling, blow pins, head/extrusion tooling, facing station tooling, and more.

- **Mold Repair and Reconditioning** – Our dedicated team of repair and modification specialists can perform standard or customized repairs, using a comprehensive 15-step procedure. We can also provide rental molds for dairy gallon and half-gallon containers during the refurbishment process.

- **Mold Replacement Components** – As part of our aftermarket service we supply neck inserts, blow pins, shear steels, striker plates, and other top-quality spare parts.

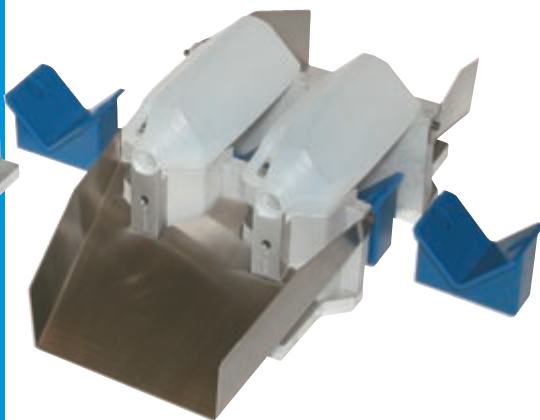
- **Technical/Processing Service** – Our specialists are available as needed to provide on-site technical support and processing assistance.



Mid-America Machining

11530 Brooklyn Road
Brooklyn, Michigan 49230
USA

Phone: (517) 592-8988
Fax: (517) 592-8991
E-mail: info@mid-americanmachining.com
Web: mid-americanmachining.com



A Longlasting Commitment to Quality

Our business is quality-driven, from the first moment we begin a project to the final inspection process. Here's how we define that quality:

The totality of factors that make up an entity. The ongoing process of building and sustaining relationships by assessing, anticipating and fulfilling stated and implied needs.



Communication is our first-order priority for every project. Customers have direct phone and e-mail access to our sales staff and design professionals, assuring timely updates and satisfactory outcomes.

Mid-America Machining was founded in 1988 by Mark Berry and has been on a fast-track to growth ever since. Originally based in Norvell, Michigan, the company began operation with two employees in a 2,500 square foot facility. Today, Mid-America occupies a 55,000 square foot plant in Brooklyn, Michigan, and employs a steadily expanding work force.

